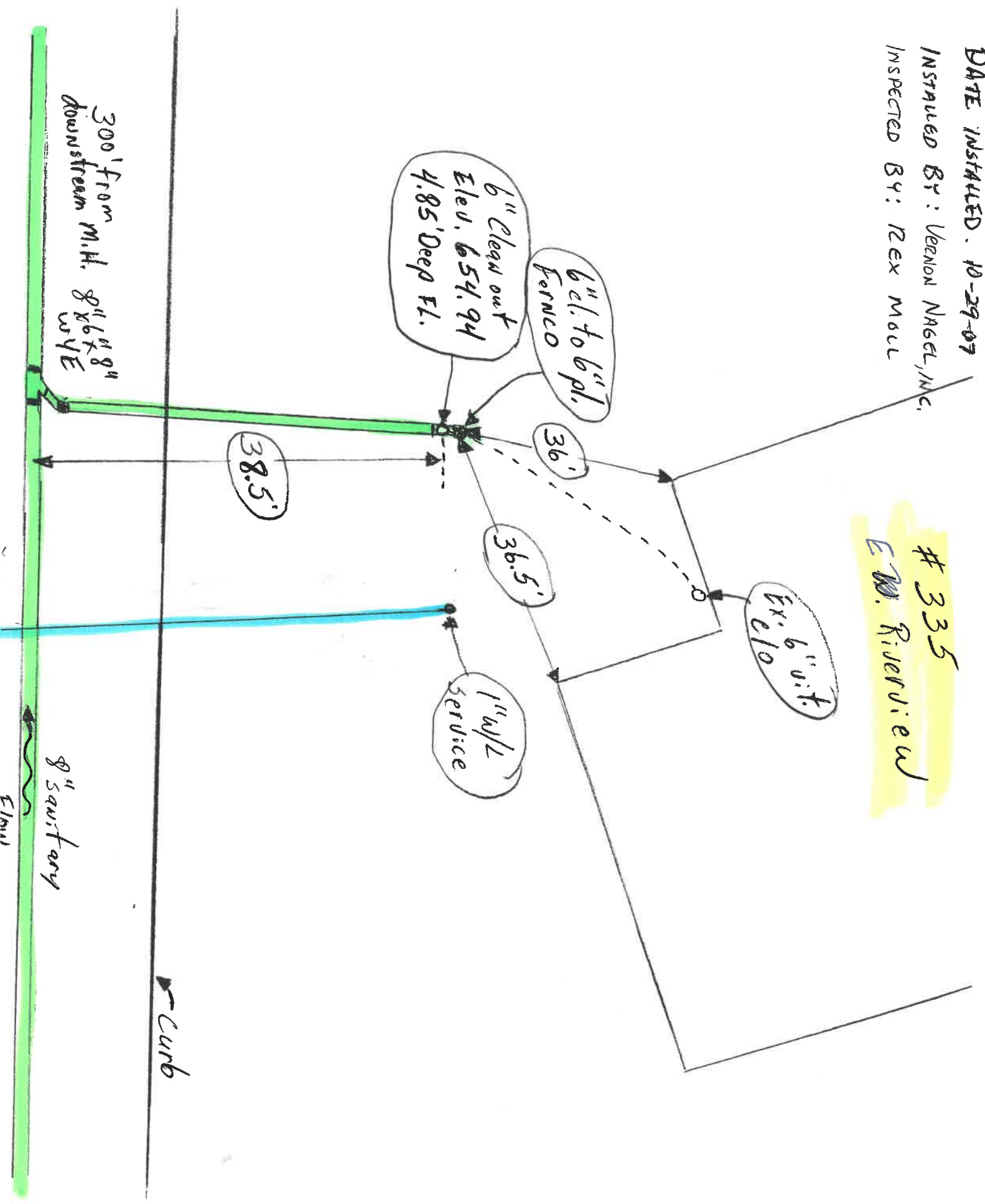


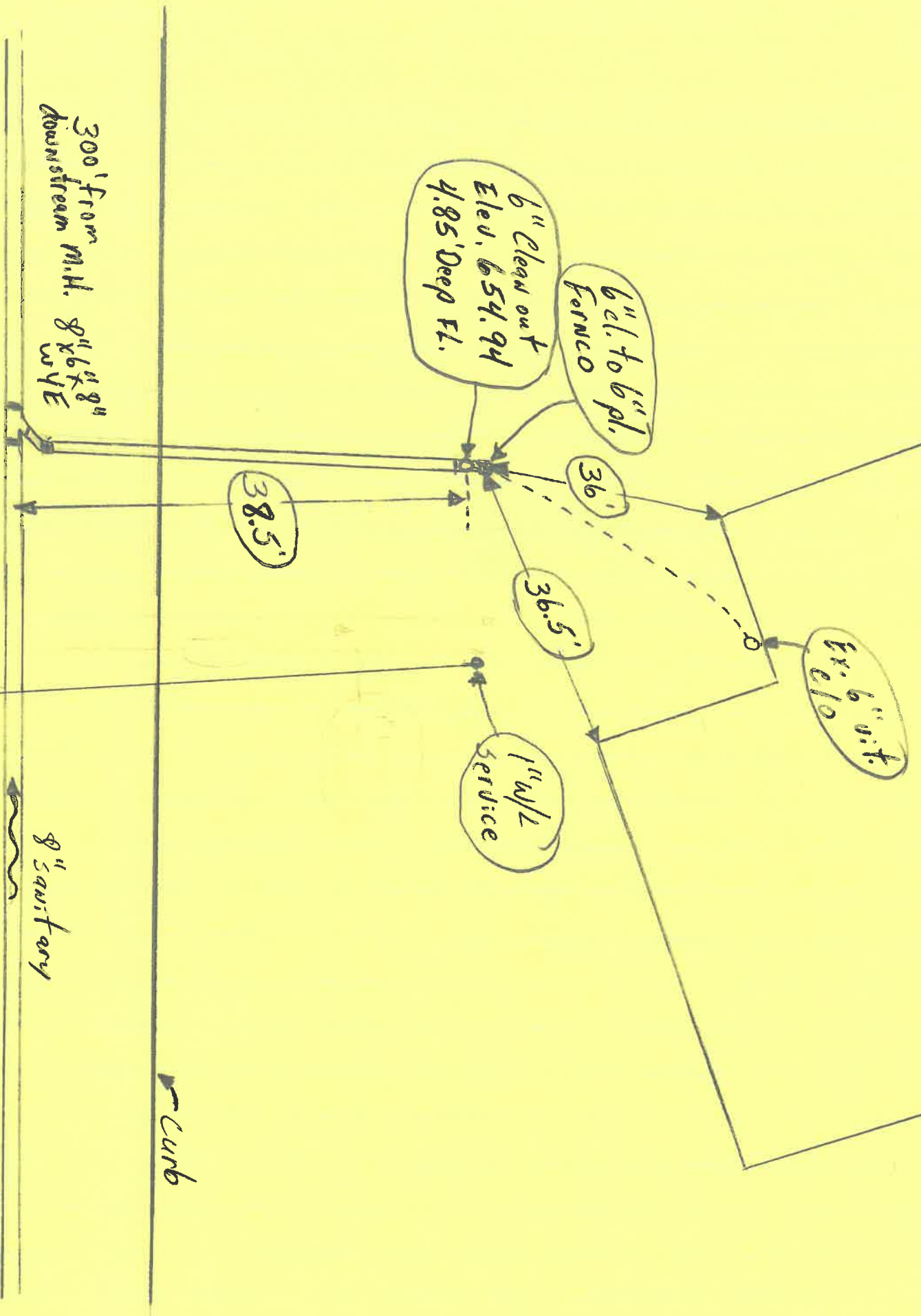
DATE INSTALLED: 10-29-07
INSTALLED BY: VERNON NAGEL, INC.
INSPECTED BY: REX MOLL

335
E.W. Riverside



DATE INSTALLED: 10-29-07
INSTALLED BY: VERNON NASEL, INC.
INSPECTED BY: REX MOLL

335
W. Riverside



300' From
downstream m.H. 8x6x8"
WYE

6" Clean out
Elev. 654.94
4.85' Deep FL.

6" to 6" pl.
PVC

36'

36.5'

1" w/2
service

6" v.t.

38.5'

8" sanitary
Flow

curb